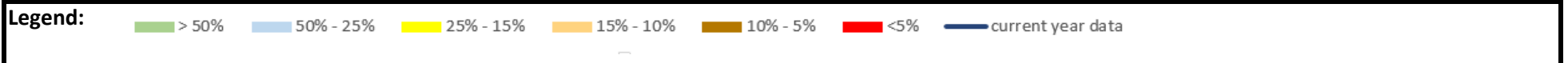
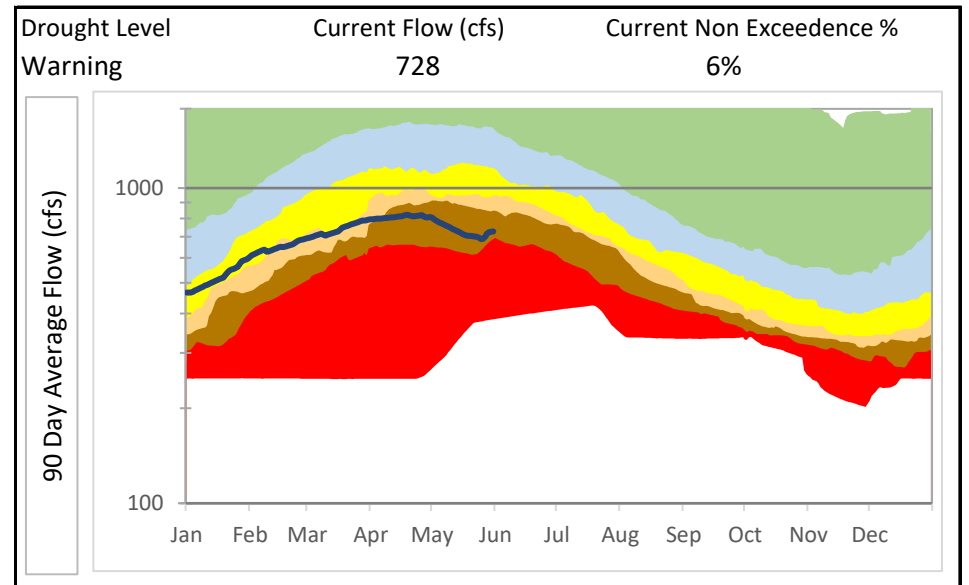
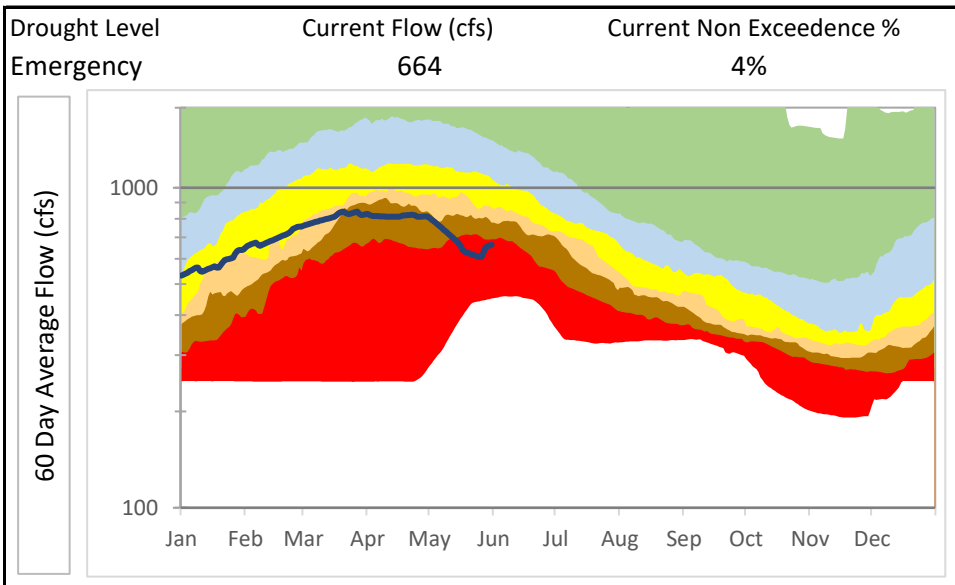
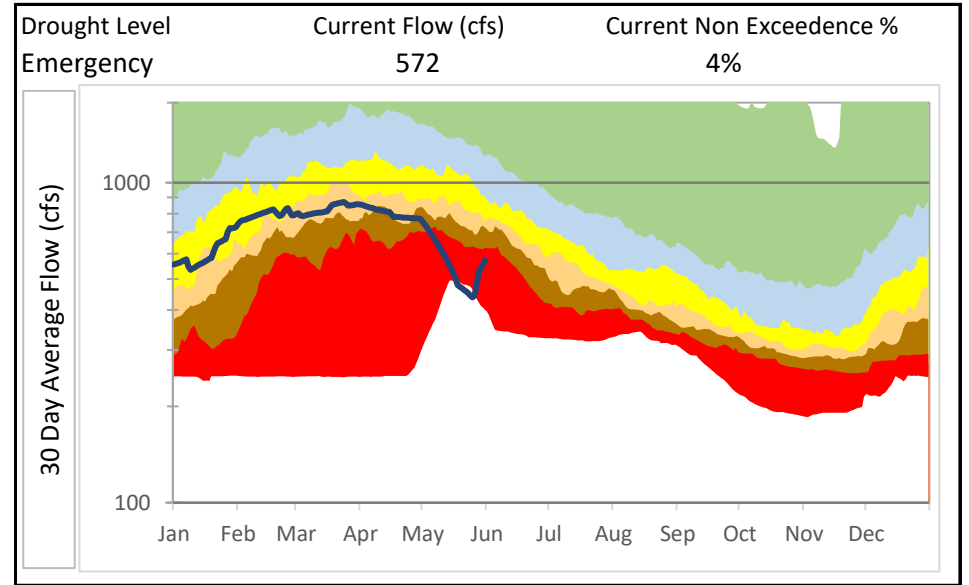
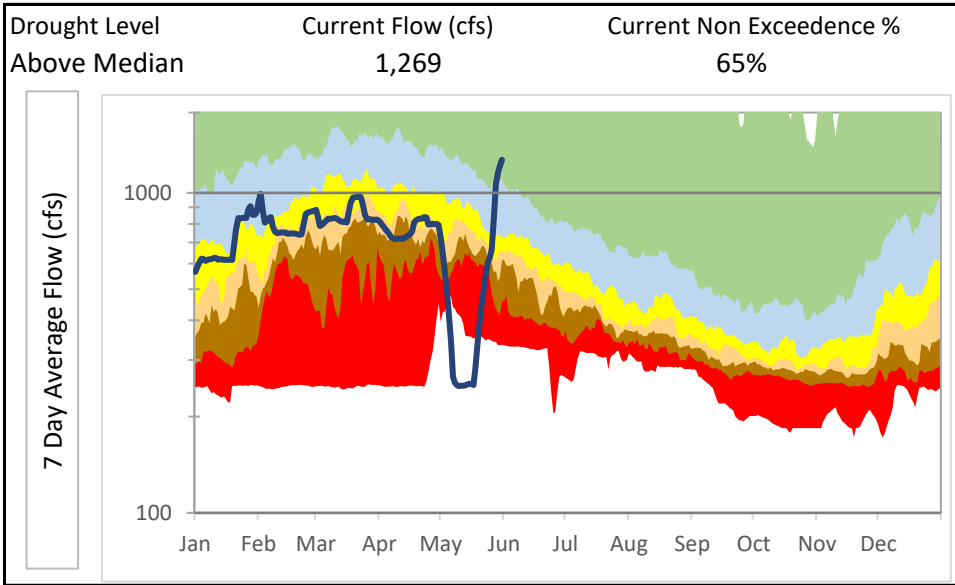


Gage #: 02382500

Name: COOSAWATTEE RIVER AT CARTERS, GA

Period of Record: 1/1/1900 -

5/31/2026



\*Disclaimer: USGS data used for this analysis. There may be some data gaps and/or provisional data

Gage #: 02382500

Name: COOSAWATTEE RIVER AT CARTERS, GA

Low Flow Statistics - Regulated Site

Period of Record: 1/1/1900 - 5/31/2026

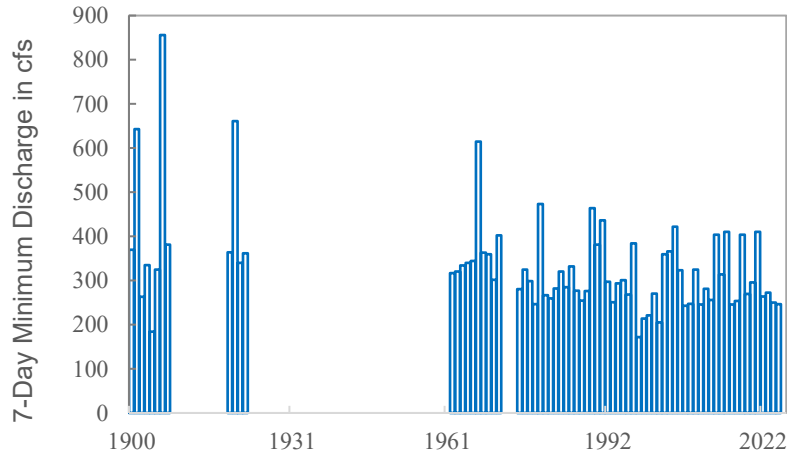
Average Flow 1,097 cfs

Drainage Area 521 square miles

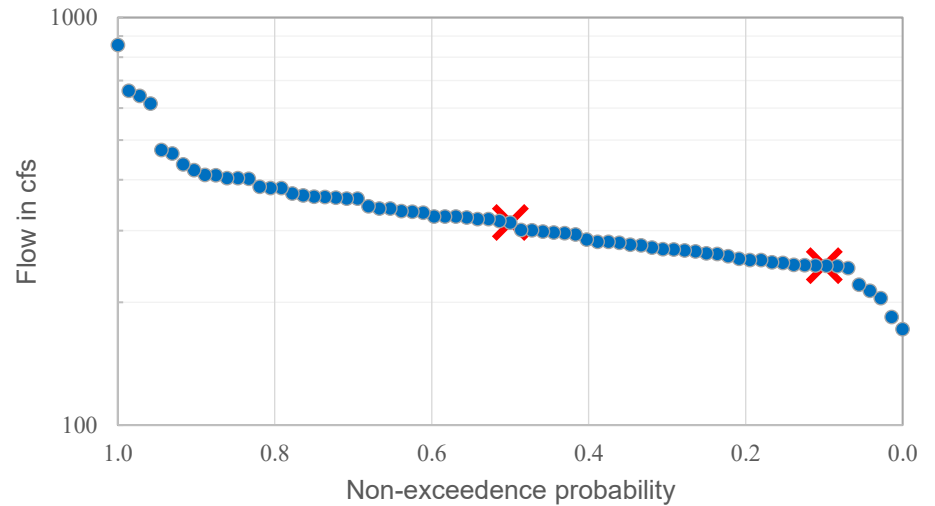
FLOW-DURATION CHARACTERISTICS

Percent Discharge	5	10	25	50	75	90	95	99	Discharge, in cubic feet per second, which was exceeded for indicated percentage of days
Discharge	2,830	2,070	1,330	820	475	328	284	244	

Plot of 7-Day Minimum Flows



Low-Flow (7-Day Minimum) Frequency Curve



LOW-FLOW CHARACTERISTICS

Low-Flow Characteristic	Discharge (CFS)
7 Day 50% Non Exceedence	314.1
7 Day 10% Non Exceedence	246.1

MONTHLY STATISTICS

	<u>Jan</u>	<u>Feb</u>	<u>Mar</u>	<u>Apr</u>	<u>May</u>	<u>Jun</u>	<u>Jul</u>	<u>Aug</u>	<u>Sep</u>	<u>Oct</u>	<u>Nov</u>	<u>Dec</u>	<u>Annual</u>
7Day 50% Non Exc	753	933	1,103	1,023	835	672	503	421	361	346	398	529	314
7Day 10% Non Exc	351	453	593	510	458	382	321	301	271	261	259	270	246

Gage #: 02382500

Name: COOSAWATTEE RIVER AT CARTERS, GA

Monthly Analysis

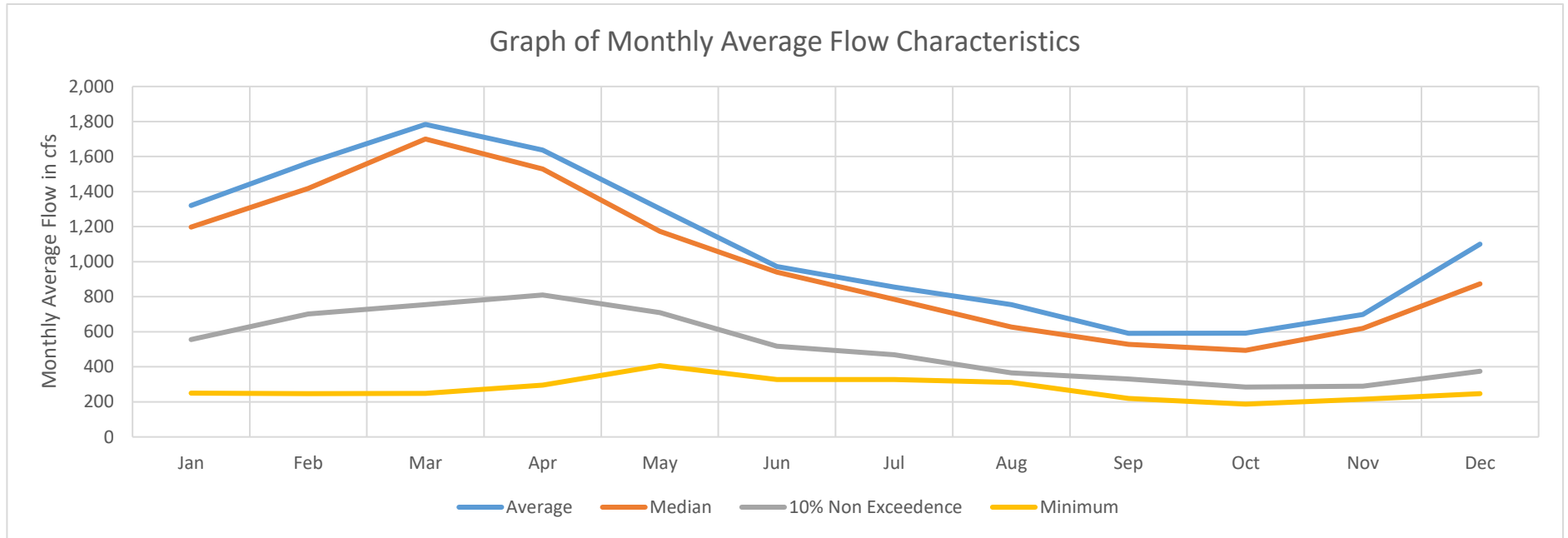
Period of Record:

1/1/1900

-

5/31/2026

Statistics of Monthly Average Flows



MONTHLY STATISTICS

	<u>Jan</u>	<u>Feb</u>	<u>Mar</u>	<u>Apr</u>	<u>May</u>	<u>Jun</u>	<u>Jul</u>	<u>Aug</u>	<u>Sep</u>	<u>Oct</u>	<u>Nov</u>	<u>Dec</u>
Average	1,320	1,564	1,784	1,637	1,302	973	855	755	591	592	699	1,101
100%	3,140	4,651	4,861	4,409	2,613	1,955	2,247	3,033	1,761	1,852	2,142	2,979
98%	2,872	3,473	4,462	3,640	2,433	1,730	1,883	2,293	1,561	1,666	1,770	2,757
95%	2,582	2,917	3,205	3,254	2,281	1,647	1,649	1,479	1,144	1,428	1,504	2,569
90%	2,193	2,472	2,909	2,628	2,177	1,549	1,388	1,164	849	956	1,337	2,182
75%	1,701	2,071	2,144	1,956	1,563	1,164	1,044	833	671	735	903	1,409
50%	1,198	1,418	1,700	1,529	1,172	941	785	627	528	494	620	873
25%	958	1,004	1,150	1,111	887	719	535	527	408	350	385	620
10%	555	702	756	810	709	518	468	366	331	285	290	375
5%	332	603	709	708	588	420	400	338	298	263	255	292
2%	283	544	322	535	440	355	360	319	286	236	236	270
0%	250	247	248	296	407	327	328	311	220	187	215	248