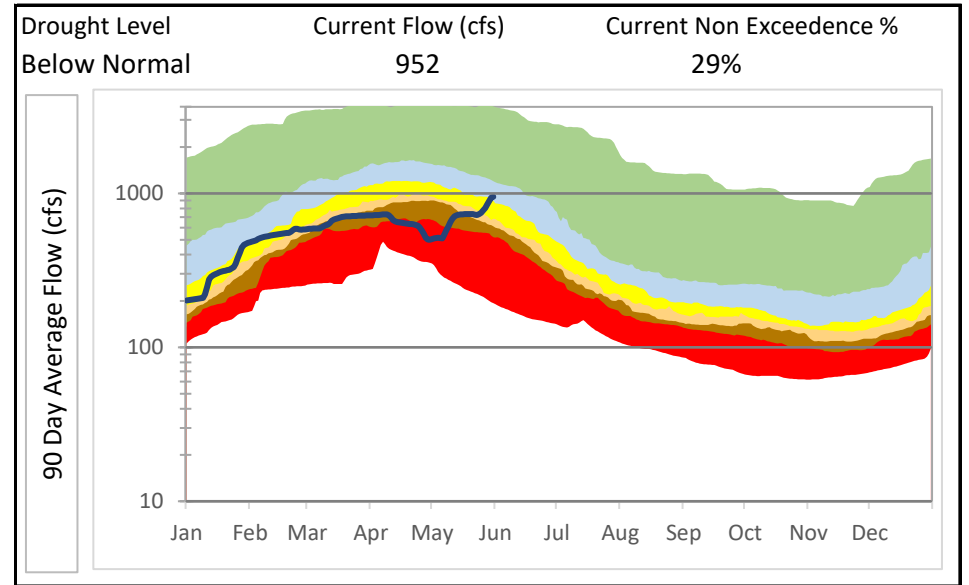
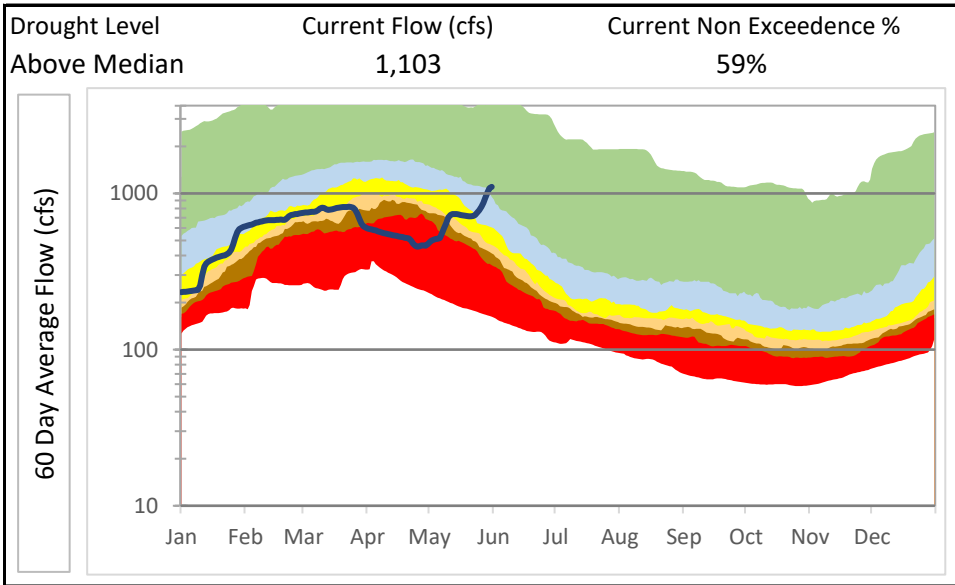
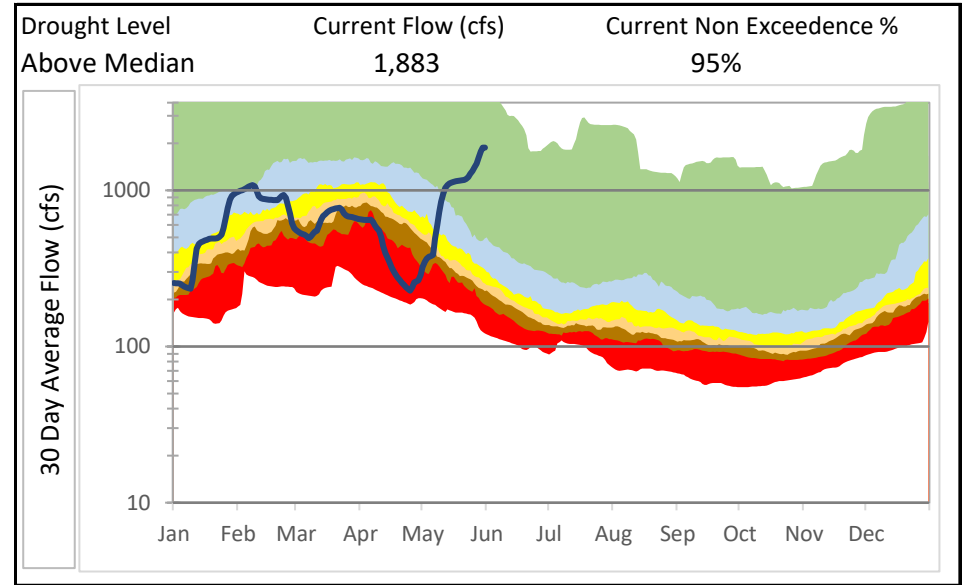
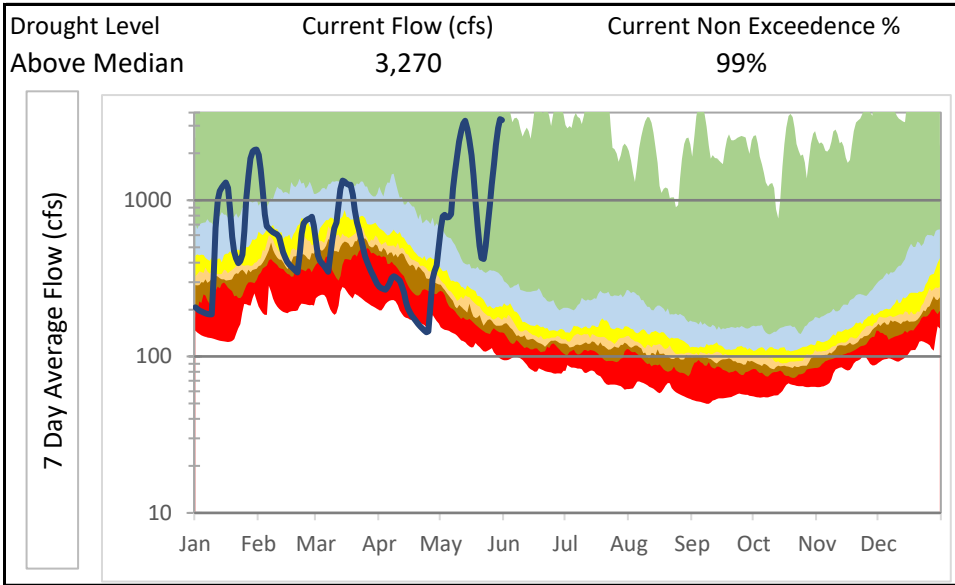


Gage #: 02467500

Name: SUCARNOOCHEE RIVER AT LIVINGSTON AL

Period of Record: 10/1/1938 -

5/31/2026



**Legend:** > 50% 50% - 25% 25% - 15% 15% - 10% 10% - 5% <5% current year data

\*Disclaimer: USGS data used for this analysis. There may be some data gaps and/or provisional data

Gage #: 02467500

Name: SUCARNOOCHEE RIVER AT LIVINGSTON AL

Low Flow Statistics - Unregulated Site

Period of Record: 10/1/1938 - 5/31/2026

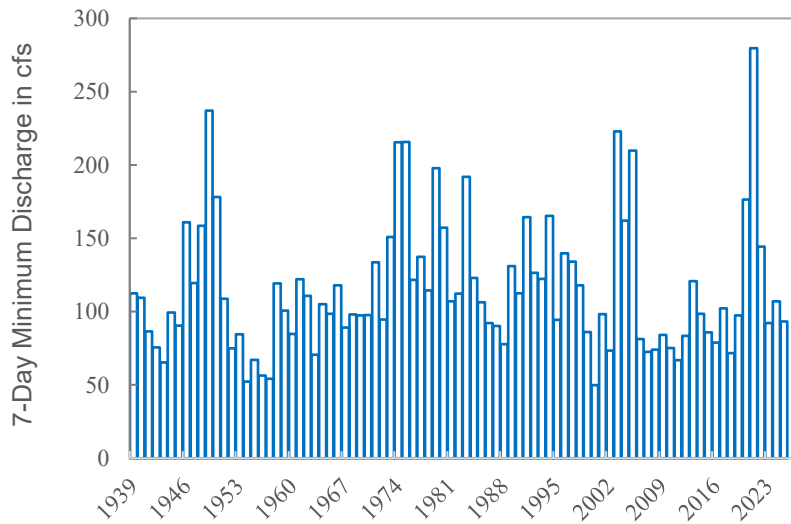
Average Flow: 823 cfs

Drainage Area: 607 square miles

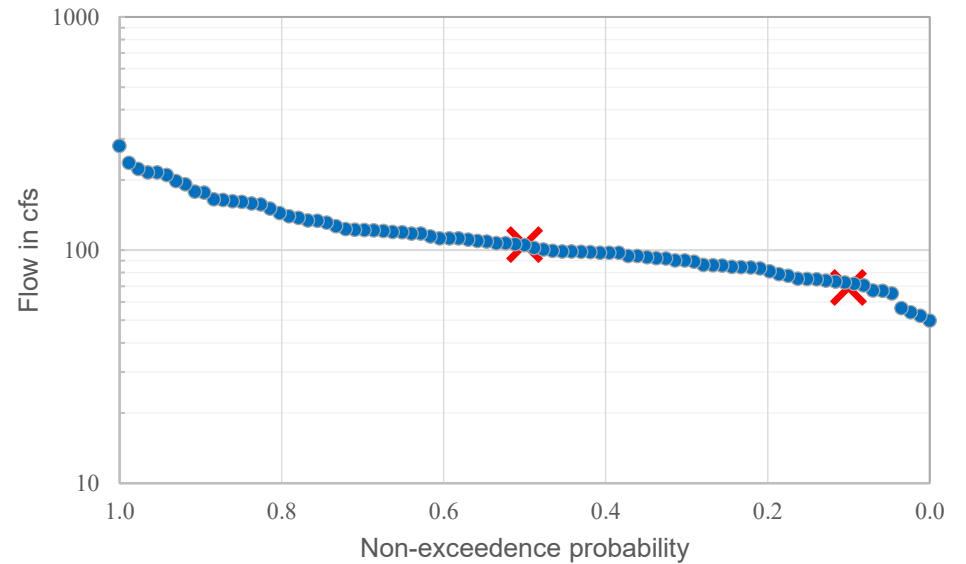
FLOW-DURATION CHARACTERISTICS

Percent Discharge	5	10	25	50	75	90	95	99	Discharge, in cubic feet per second, which was exceeded for indicated percentage of days
	3,320	2,180	798	344	173	118	100	73	

Plot of 7-Day Minimum Flows



Low-Flow (7-Day Minimum) Frequency Curve



LOW-FLOW CHARACTERISTICS

Low-Flow Characteristic  
7Q2  
7Q10

Discharge (CFS)  
105.8  
69.3

MONTHLY STATISTICS

	<u>Jan</u>	<u>Feb</u>	<u>Mar</u>	<u>Apr</u>	<u>May</u>	<u>Jun</u>	<u>Jul</u>	<u>Aug</u>	<u>Sep</u>	<u>Oct</u>	<u>Nov</u>	<u>Dec</u>	<u>Annual</u>
Monthly 7Q2	432	582	612	435	231	174	160	136	120	122	171	282	106
Monthly 7Q10	221	314	335	239	140	101	92	81	76	78	100	143	69

Gage #: 02467500

Name: SUCARNOOCHEE RIVER AT LIVINGSTON AL

Monthly Analysis

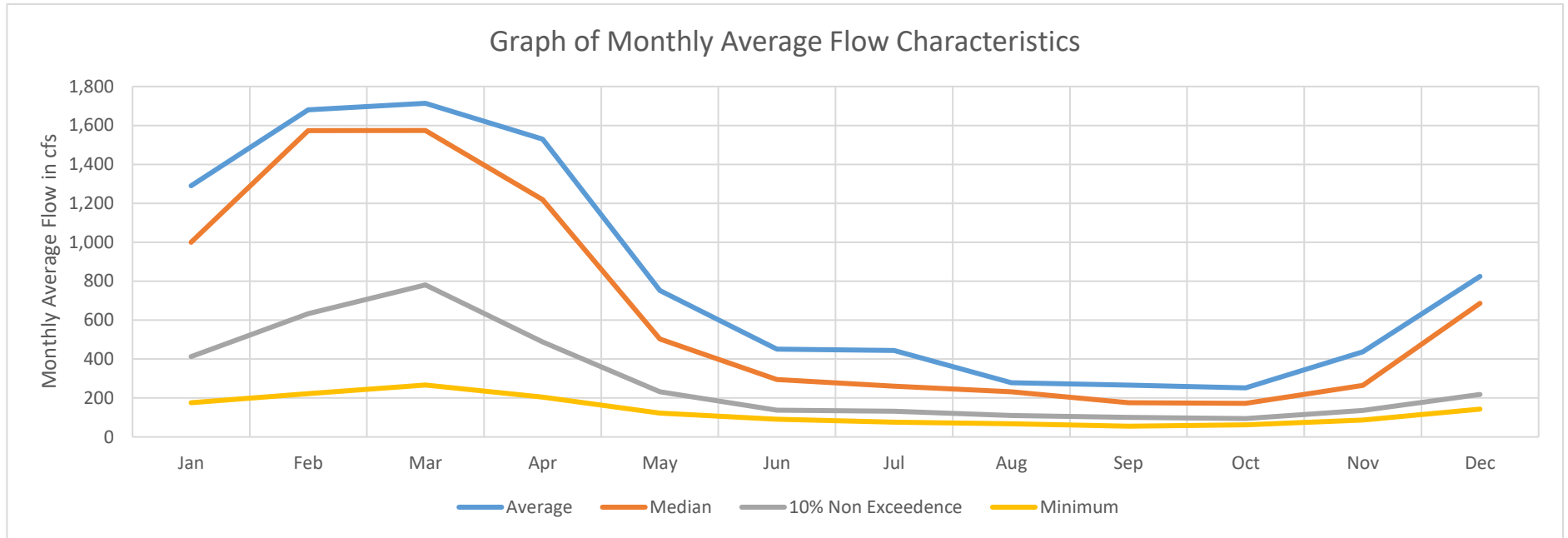
Period of Record:

10/1/1938

-

5/31/2026

Statistics of Monthly Average Flows



MONTHLY STATISTICS

	<u>Jan</u>	<u>Feb</u>	<u>Mar</u>	<u>Apr</u>	<u>May</u>	<u>Jun</u>	<u>Jul</u>	<u>Aug</u>	<u>Sep</u>	<u>Oct</u>	<u>Nov</u>	<u>Dec</u>
Average	1,290	1,680	1,714	1,529	752	451	444	278	266	252	437	825
100%	4,411	5,406	4,376	6,244	4,968	1,939	2,549	1,240	1,441	1,020	2,259	4,077
98%	3,769	4,525	3,984	4,579	2,281	1,640	1,845	791	1,084	830	1,767	2,249
95%	3,382	3,324	3,249	3,888	1,918	1,471	1,374	663	818	695	1,525	1,919
90%	2,636	2,861	2,770	2,932	1,502	1,159	957	439	667	542	969	1,643
75%	1,636	2,141	2,154	1,958	984	520	456	363	270	282	509	1,126
50%	1,000	1,573	1,574	1,219	503	294	260	232	175	172	265	686
25%	724	851	1,109	665	321	174	191	152	125	126	172	357
10%	412	633	781	488	232	137	132	110	100	94	136	219
5%	341	494	607	279	190	122	115	95	90	83	120	201
2%	273	435	419	229	165	112	104	75	72	74	110	189
0%	175	222	267	204	123	90	76	68	55	63	87	143